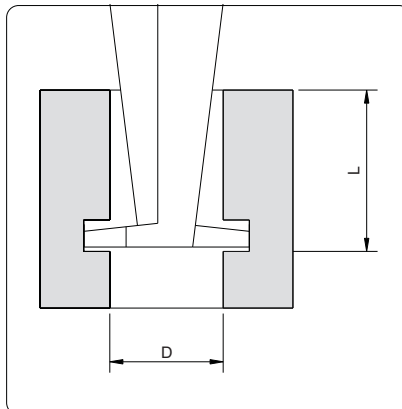


unit: mm

<p><math>h &gt; 2\text{mm}</math></p>	<p><math>w &lt; 10\text{mm}</math></p>	

- ◆ Measure diameter of grooves inside bores
- ◆ Resolution: 0.01mm/0.0005"
- ◆ Automatic power on/off
- ◆ Buttons: on/off, zero, mm/inch
- ◆ Data output(cable code: 100-11 or 100-12)
- ◆ Made of stainless steel

Application



D	L
Ø25	<50mm
Ø26	<60mm
Ø27~300	<110mm

Code	Range	Accuracy
132-012-11	25-300mm	±0.05mm