

228

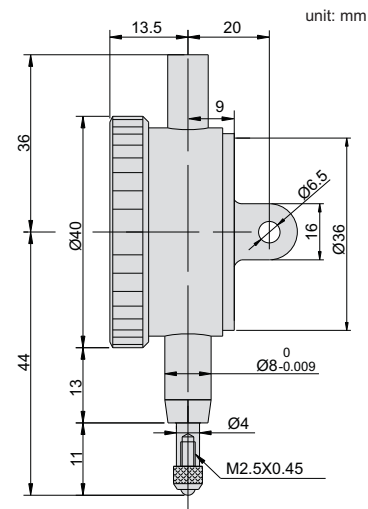
DIAL INDICATOR



- ◆ Bezel: $\varnothing 40\text{mm}$
- ◆ Graduation: 0.001mm
- ◆ With limit hands
- ◆ Jeweled bearing
- ◆ Supplied with lug and flat back



228-001-01



clamping



contact points **(optional)**



Code	Range	Accuracy	Hysteresis	Range/rev	Scale
228-001-01	1mm	$3\mu\text{m}$	$1.5\mu\text{m}$	$0.1\mu\text{m}$	0-100