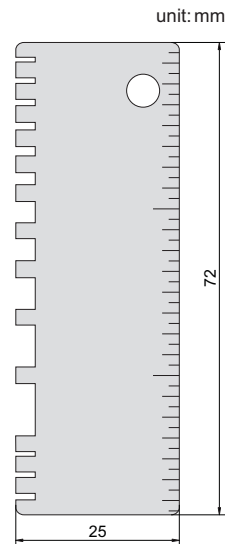
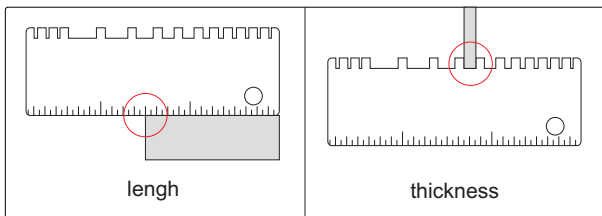


742

THICKNESS GAUGE

- ◆ Made of stainless steel



Code	Application	Range	Graduation	Accuracy
742-003-11	length	0-2 3/4"	1/16"	1/32"
	thickness	24GA.(.0239"), 22GA.(.0299"), 20GA.(.0359")	—	±0.002"
		18GA.(.0478"), 16GA.(.0598"), 14GA.(.0747"), 1/8"(0.125"), 10GA.(.1345"), 3/16"(0.1875"), 1/4"(0.250"), 5/16"(0.3125")	—	±0.004"
		0.024", 0.030", 0.035"	—	±0.002"